

The logo for ADAMI™ CDx is rendered in a 3D, metallic blue font. The letters are bold and have a slight shadow beneath them, giving them a three-dimensional appearance. The 'TM' symbol is smaller and positioned to the right of the 'I' in 'ADAMI'.

ADAMI™ CDx

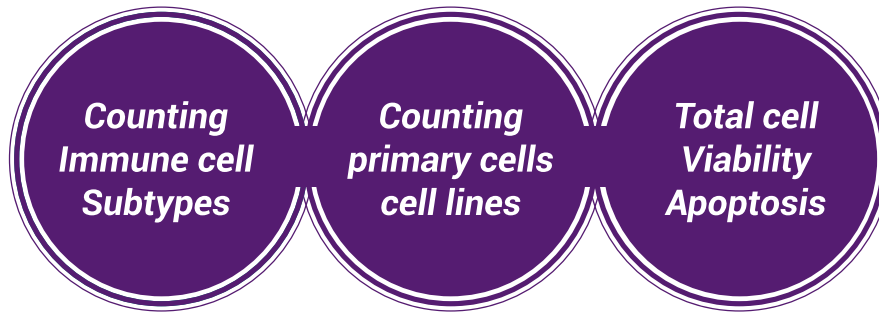
Versatile QC instrument for immune cell therapy

- T cell: CD4/CD8/CD3
- NK cell: CD3/CD56&16/CD45
- B cell: CD3/CD19/CD45
- Monocyte: CD3/CD14/CD45



ADAMII™ CDx

ADAMII™ CDx is a versatile image-based immunophenotyping instrument for QC of cell therapy manufacturing process.



KEY FEATURES & BENEFITS

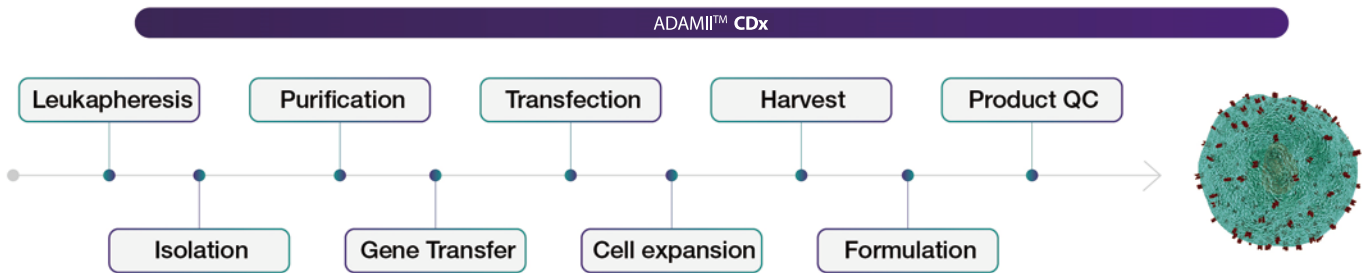
- Absolute CD marker positive cell counting
- Various CD marker panels (T, NK, B cell and etc.)
- Easy to use in QC process
- Total cell counting, viability, cell size, growth curve
- Apoptosis assay
- High-quality all-in-one system for cell processing
- 21 CFR Part 11 ready



- Accurate measurement
- Absolute counts
- High reproducibility

ADAMII™ CDx, image-based immunophenotyping instrument

ADAMII™ CDx is an image-based immunophenotyping instrument for cell therapy R&D and manufacturing process QC (quality control). In manufacturing process, labor-intensive and repetitive work could be efficiently reduced by using ADAMII™ CDx.



Lymphocyte subset assay

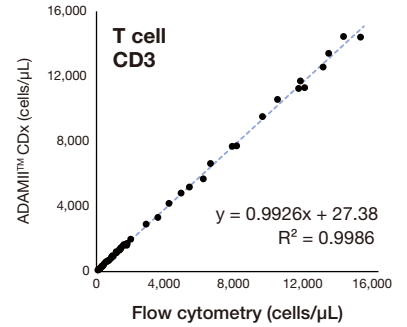
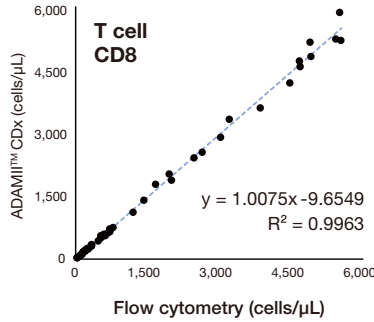
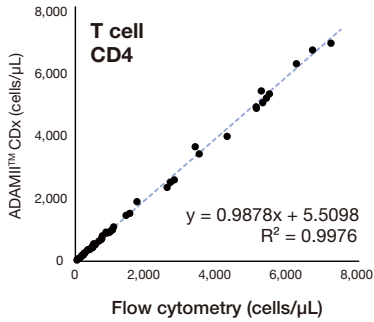
Every cell expresses specific proteins on cell surface, commonly known as cell surface marker or CD marker. In the development and manufacturing process of cell therapy, cell identification based on CD markers is essential. There are various panel sets for ADAMII™ CDx, which can do cell identification and absolute counting (including ratio). Currently, four panels (T cell, NK cell, B cell, Monocyte) are ready to use.

CD marker panel kit list	Fluorescence channel 1 (BV510)	Fluorescence channel 2 (PE)	Fluorescence channel 3 (PerCP)
T cell	CD4	CD8	CD3
NK cell	CD3	CD56&16	CD45
B cell	CD3	CD19	CD45
Monocyte	CD3	CD14	CD45

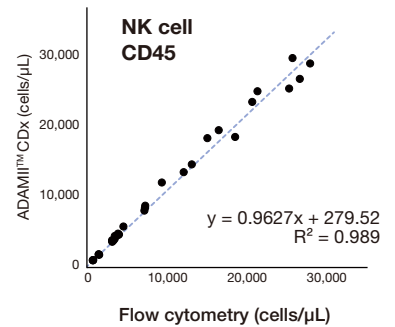
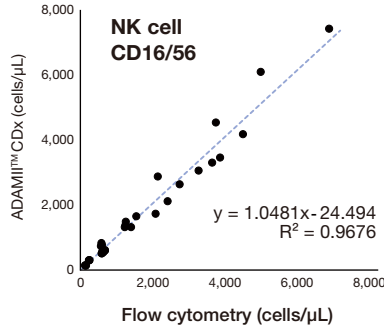
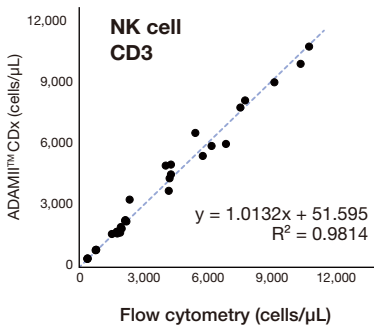
High correlation between ADAMII™ CDx and flow cytometry

Non-specialist and un-skilled users can produce accurate results and high reproducibility with ADAMII™ CDx. If you and your lab face difficulty using flow cytometry, ADAMII™ CDx could be a good alternative.

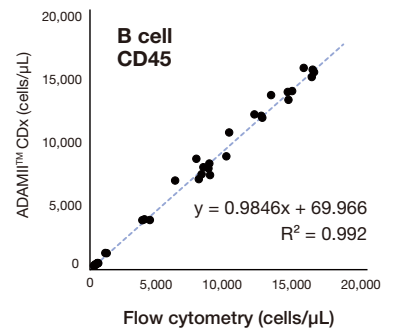
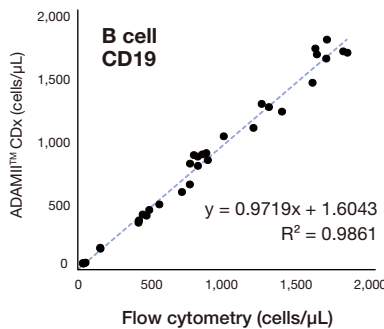
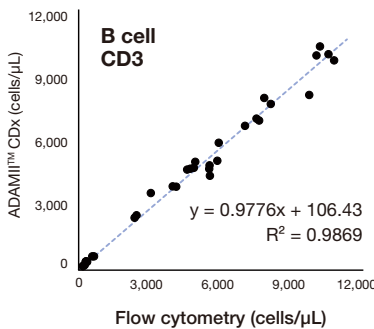
T Cell Panel



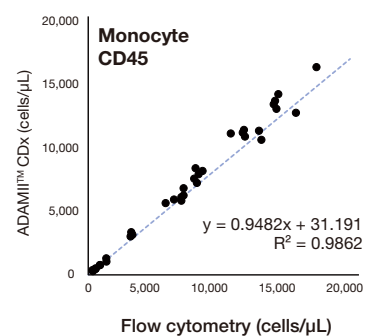
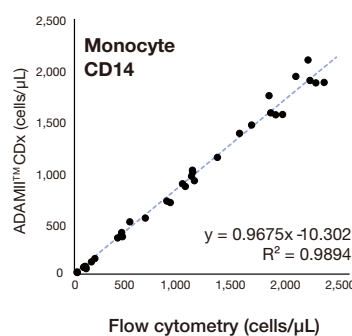
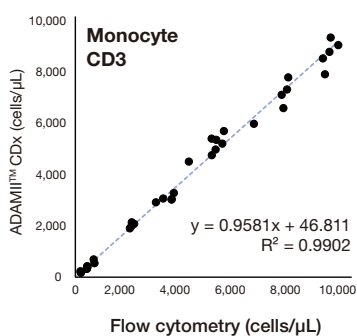
NK Cell Panel



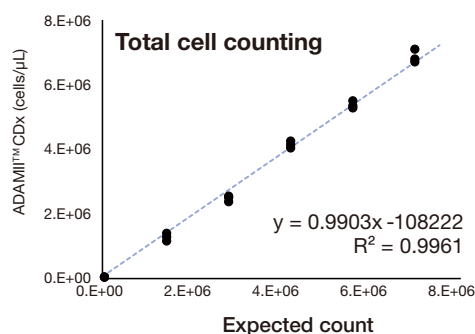
B Cell Panel



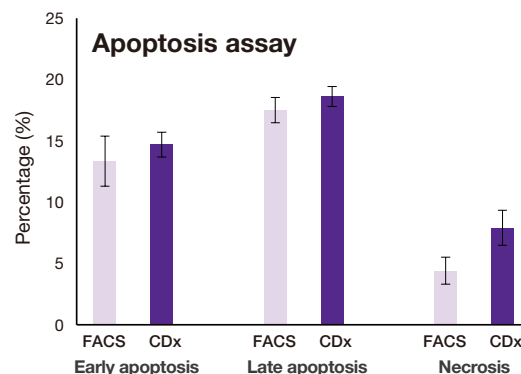
Monocyte Panel



Cell counting & Apoptosis



Linearity test result between ADAMI™ CDx and expected concentration using Jurkat cells



After treatment 20 μM camptothecin, Jurkat cells were stained with apoptosis kit and analysed by ADAMI™ CDx and Flow cytometer.

Fulfilling 21 CFR Part 11 Compliance

The ADAMI™ CDx regulates electronic records and signature by only allowing specific user(s) to modify data. Every action of user is recorded in an audit trail, while date, time and specific details are displayed.

Specification

Item	Description
Lens	10 X
Light source	Bright field, UV, Green LED
Analysis time*	4 min 20 sec (75 Frames)
Loading volume	25 μL
Measuring volume	≤ 7.8 μL
Measurement range	5 x 10E4 ~ 5 x 10E6 cells/mL
Dimensions	300 mm (W) x 420 mm (D) x 370 mm (H)
Weight	19.3 kg

*It depends on assay or frame user chooses.



FL channel	Bright field channel	Fluorescence channel 1	Fluorescence channel 2	Fluorescence channel 3
Dye	Bright	BV510	PE	PerCP
Light source	Green LED (up-light)	405 nm (UV LED)	525 nm (Green)	525 nm (Green)

Ordering information

Cat. No.	Product	Contents
ADAMI-CDx	Image-based immunophenotyping instrument	Main instrument, Laptop
ACT-025	T cell reagent	Anti-Human CD4 BV510 / CD8 PE / CD3 PerCP 25 tests
ACNK-025	NK cell reagent	Anti-Human CD3 BV510 / CD16+CD56 PE / CD45 PerCP 25 tests
ACB-025	B cell reagent	Anti-Human CD3 BV510 / CD19 PE / CD45 PerCP 25 tests
ACMO-025	Monocyte reagent	Anti-Human CD3 BV510 / CD14 PE / CD45 PerCP 25 tests
ACAP-025	Apoptosis kit	25 Tests
ACCV-025	Cell viability reagent for CDx	25 Tests
A2AS-025	Assay Slide	1 ch, 25 Tests