

A little bit of everything for cell research

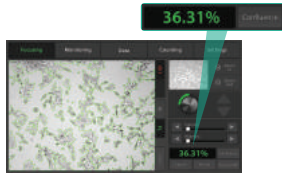


Meet JuLI™ FL to meet your needs for live cell imaging

The JuLI™ FL, the fluorescence cell history recorder, with the states-of-the-art optics enables users to perform the image capturing and the time-lapse movie making. It also can support cell counting and measuring the level of fluorescence expression.

Automated cell confluence detection

Quantified cell confluence results with low variation



10.1" color LCD touch screen

User friendly interface



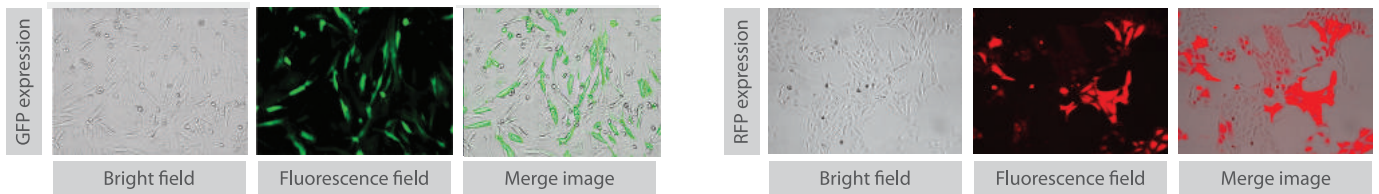
Dual system (*Optional)

Compare control and experimental samples using dual system, concurrently



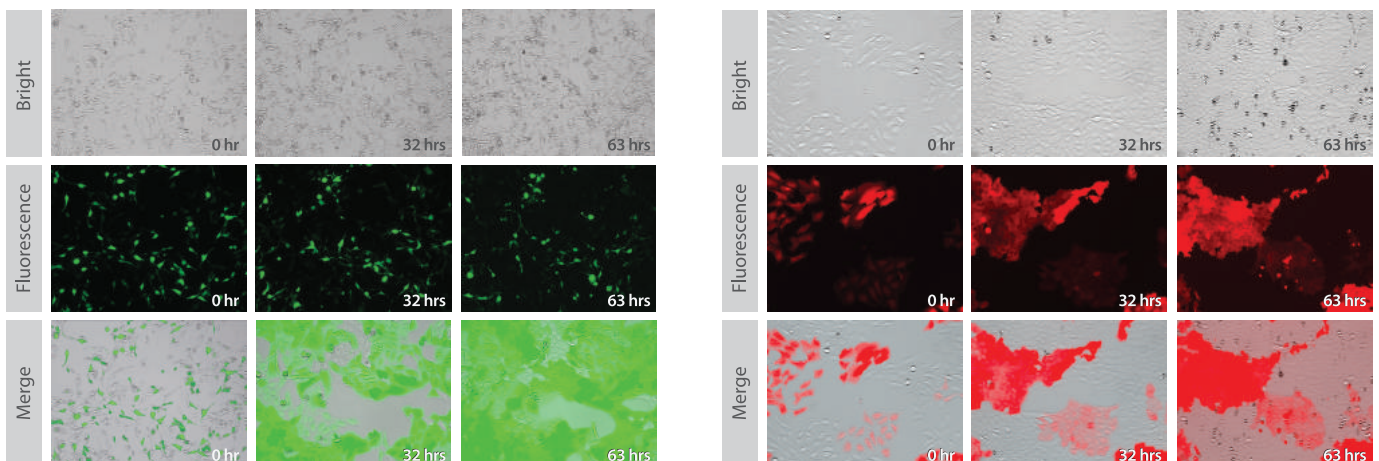
Live cell image capture

U-2 OS cells were transfected using the Neon™ transfection system (from Life Technologies) and 0.25 µg of the the EGFP-N1 plasmid & RFP plasmid. 48 hours after transfection, the images are captured.



Time-lapse image capture and movie making

Cell-growth images were captured for 63 hours with 20 minutes intervals in U-2 OS GFP & RFP stable cell line.

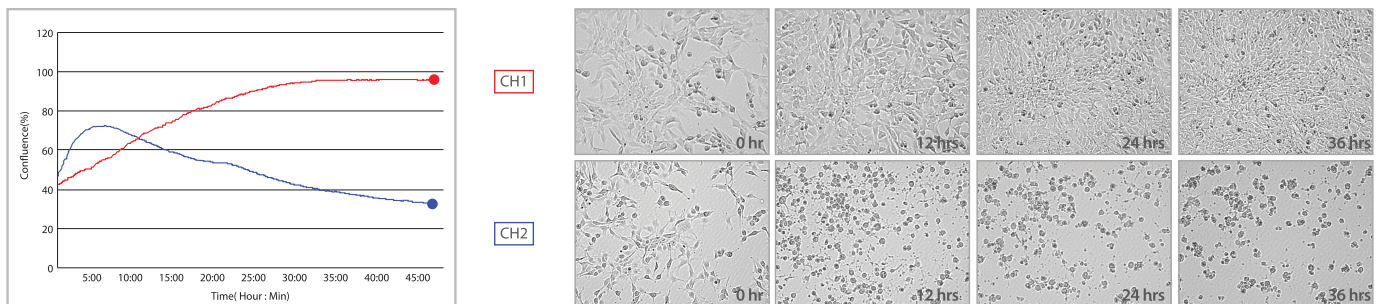


Just capture images, make movies

as well as check the expression level

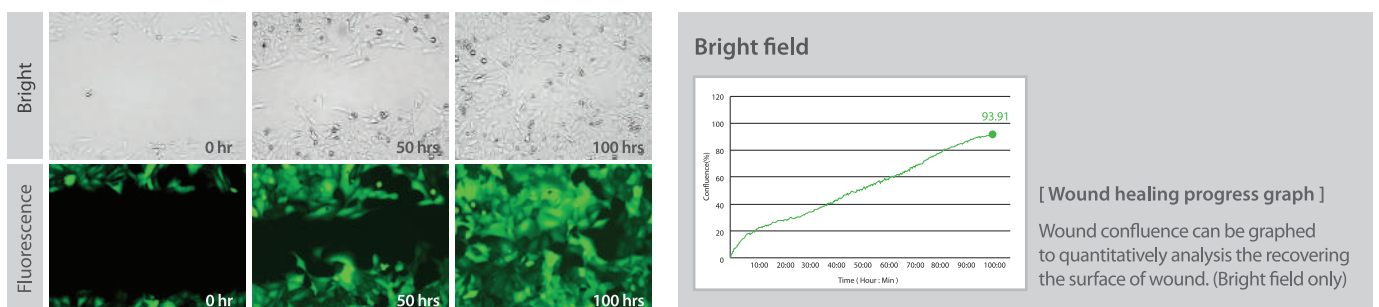
Real time cell growth curve

HeLa cells growth were observed for 40 hours with 10 minutes intervals and analyzed monolayer confluence. For apoptosis assays, experimental group (channel 2) was treated with Sataurosporine.



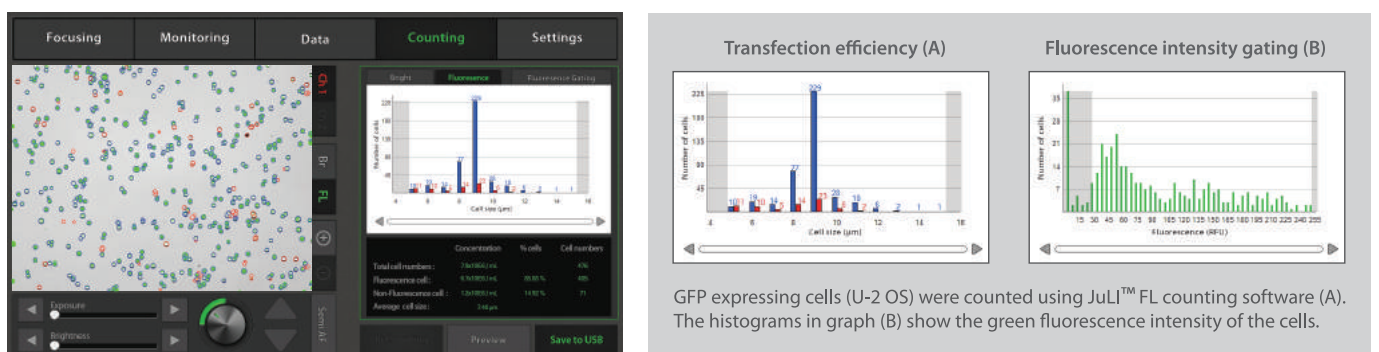
Cell migration (wound healing) assay

U-2 OS stable cells were incubated for 100 hours after scratch. JuLI™ FL calculated the confluence with growth of surface unfarmed automatically.



Fluorescence expression level checking

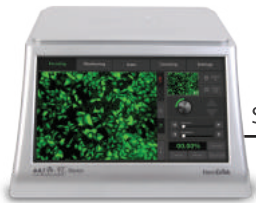
JuLI™ FL counting software provides actual cell counts, viability and automatically calculates cell concentration. It also can identify and measure the levels of fluorescence (GFP or RFP expression).



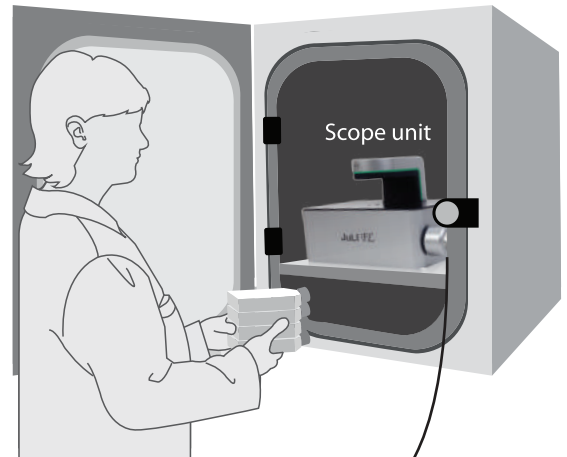
It works inside incubator!

Applications

- Cell growth monitoring
- Cell migration assay
- Cell confluence detection
- Cell viability & counting
- Cell culture quality control
- Proliferation assay
- Cell-based assay optimization



Station unit



Scope unit

Specifications

Magnification	4 X and digital zoom (~ 450 X)
Image resolution	1280 x 960 pixels (1.3 M)
Exported formats	JPEG, TIFF, BMP, PNG (image), AVI (movie), CSV (raw data)
Display	10.1" LCD touch screen
Light source	GFP channel (JULI-FLG04): Blue LED RFP channel (JULI-FLR04): Green LED
Optical filter	GFP channel (JULI-FLG04): Excitation 466/40 nm, Emission 525/50 nm RFP channel (JULI-FLR04): Excitation 525/50 nm, Emission 580LP
Dimension & Weight	Scope unit : 300 x 190 x 188 mm, 4.5 kg Station unit : 282 x 285 x 160 mm, 3.2 kg
Storage	320 GB Hard drive, 4 GB USB drive
Power	AC100 - 240Va.c., 1.9A, 100w, 50/60 Hz
Operating Environment	5 - 40 °C, 20 - 95 %

Ordering information

	Cat. No.	Description	Remark
Device	JULI-FLG04	JuLI FL (Single set)	
	JULI-FLGD04	JuLI FL (Dual set)	For GFP channel
	JULI-FGSC	Scope unit of JuLI FL	
	JULI-FLR04	JuLI FL (Single set)	
	JULI-FLRD04	JuLI FL (Dual set)	For RFP channel
	JULI-FRSC	Scope unit of JuLI FL	
Accessories	JULI-BRCM	Counting starter kit	Counting module set, Cell counting slide
	JULI-BRTB	XY stage	
Disposable	JULI-BRS50	Cell counting slide	50 slides (100 counts)
	JULI-BRS1000	Cell counting slide	1,000 slides (2,000 counts)
	JULI-BRS5000	Cell counting slide	5,000 slides (10,000 counts)

Nano**En**Tek

NESCT-JUF-001E(V.1.1)

website

www.nanoentek.com

e-mail

sales@nanoentek.com

NanoEnTek, Inc.

851-14, Seohae-ro, Paltan-myeon, Hwaseong-si,
Gyeonggi-do, 18531, Korea
Tel : +82-2-6220-7940 / Fax : +82-2-6220-7999

NanoEnTek America, Inc.

240 Bear Hill Road, Suite 101, Waltham,
MA 02451, USA
Tel : +1-781-472-2558 / Fax : +1-781-790-5649