

THE WORLD'S FASTEST AUTOMATED CELL COUNTER

# LESS THAN 1 SEC!

*EVE™ PLUS*



**EVE™ PLUS**, Automated cell counter, with states-of-the-art optics provides image analysis for cell counting. The EVE™ PLUS is a benchtop size counter, designed to measure live, dead, and total counting, which gives us capability for viability with accuracy.

## Key features and benefits

### FAST

- Count less than 1 second

### EASY

- Trypan blue staining method
- Erythrosin B staining method
- Auto focus, Manual focus
- Monitor to view the cell images
- Maintenance not required
- Small and compact (Benchtop size)

### ACCURATE

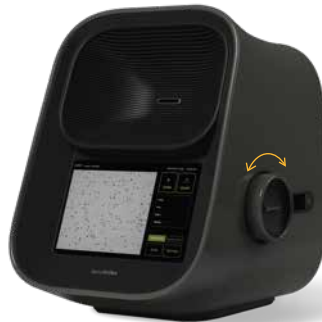
- Automated image analysis
- Count aggregated cell
- Cell size gating function (Select range of cell size)
- Applicable for broad range of cell sizes and types

## Convenient for use

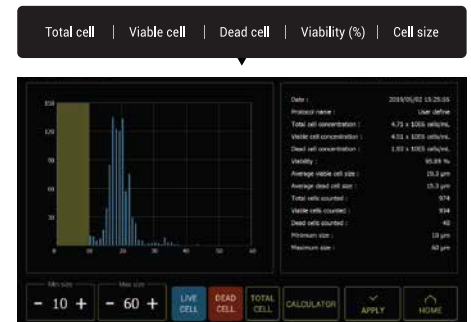
STEP 01. Load the sample



STEP 02. Adjust the focus

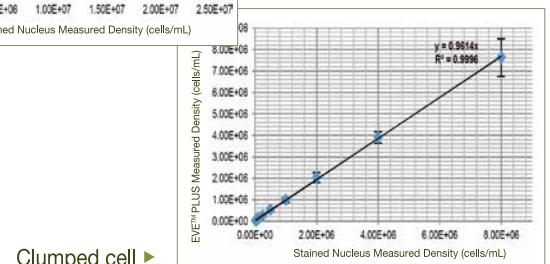
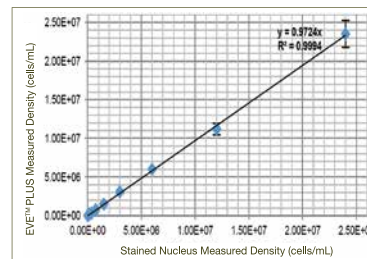
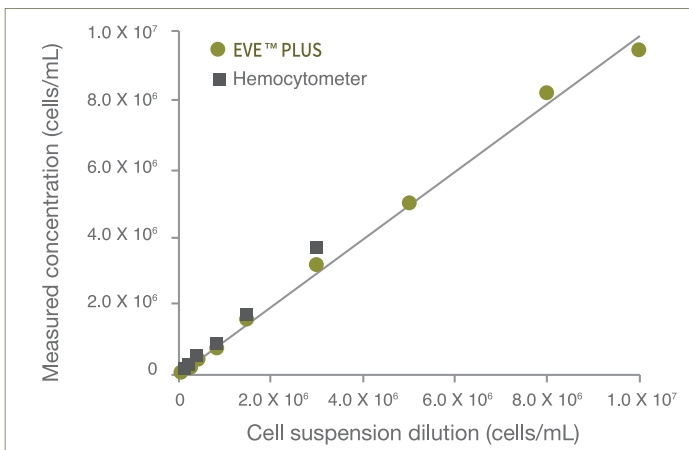


STEP 03. Get the results

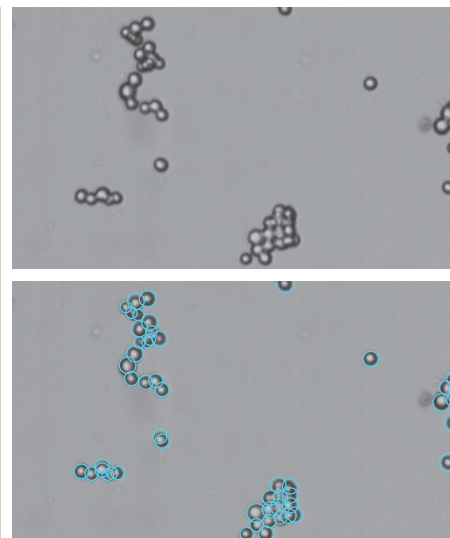
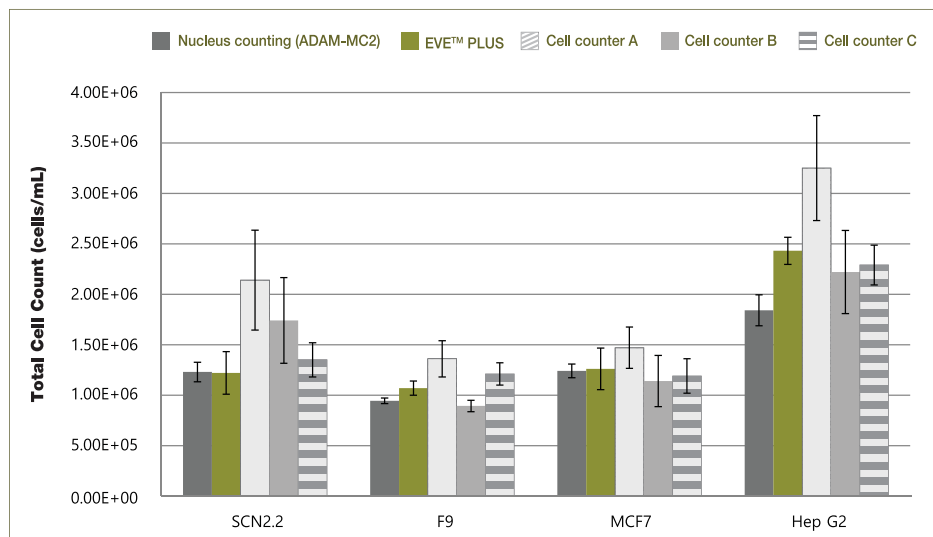


## Results of Accuracy test

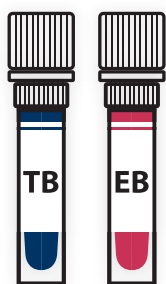
Measuring from the EVE™ PLUS extends further the high concentration range than hemocytometer readings.



## Results of Correlation Test (Clumped cell)



Clumped cells were counted with EVE™ PLUS, nucleus counting, and the automated cell counters A, B, C. NanoEntek's ADAM-MC2 device was used for nucleus counting. It is accurate in clumped cells by counting the stained nuclei through the PI staining method. EVE™ PLUS provides accurate and precise counting for all cell lines, ensuring reliable results comparable to the nucleus counting. The other automated cell counters A, B, and C were shown inaccurate numbers in the clumped cell. EVE™ PLUS identifies and counts the individual cells within the clumped cells for accurate analysis.

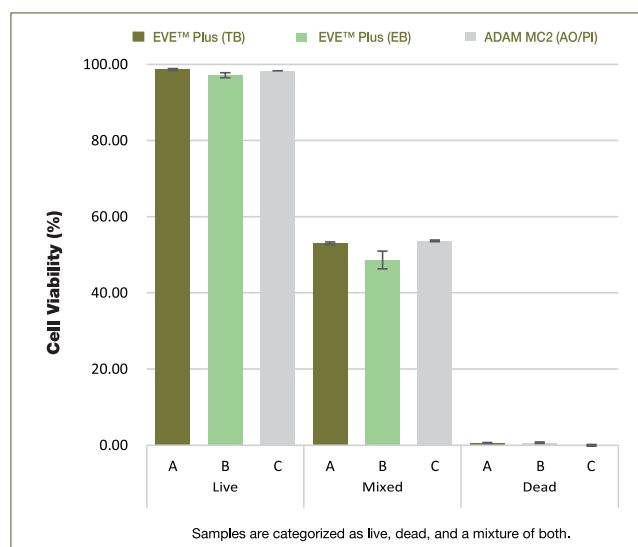
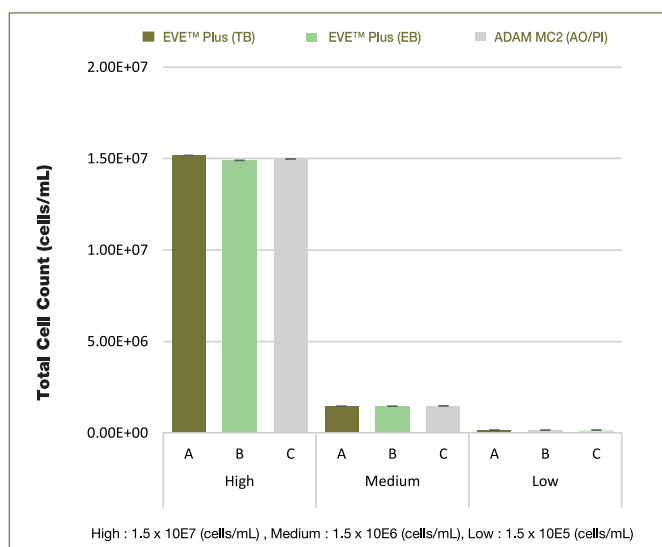


## 0.4% Trypan Blue or 0.05% Erythrosin B Staining

Trypan blue and Erythrosin B staining reagents are now compatible with EVE™ Plus, offering reliable options for assessing total cell count and viability. Both reagents stain only non-viable cells, as the dye does not penetrate cells with intact membranes.

Trypan blue has been the most commonly used reagent for cell viability, however, it is known to be carcinogenic. Due to increasing environmental and health concerns, non-toxic Erythrosin B has gained attention in many European countries as an alternative to trypan blue.

## Results of Correlation Test



Jurkat cells were counted using EVE™ Plus and the ADAM-MC2, a fluorescence automated cell counter, using trypan blue, Erythrosin B, and acridine orange/PI for staining. EVE™ plus using trypan blue and Erythrosin B reagent shows the similar results in total cell and viability with the nucleus counter for cell lines.



Scan me

## Cell lines validated on EVE™ PLUS

Cell Type	Animal	Organ	Growth Properties
HeLa	Human	Skin	Adherent
NIH-3T3	Mouse	Embryo	Adherent
U-2 OS	Human	Bone	Adherent
Jurkat	Human	Blood	Suspension
KG-1	Human	Blood	Suspension
HepG2	Human	Liver	Adherent
Hep3B	Human	Liver	Adherent
LNCaP	Human	Prostate	Adherent
SH-SY5Y	Human	Brain	Adherent
SCN2.2	Rat	Brain	Adherent
F9	Mouse	Embryo	Adherent
MCF7	Human	Breast	Adherent
A549	Human	Lung	Adherent
GH3	Rat	Pituitary gland	Adherent

## Specifications

Item	Description
Counting time	<1 sec (Manual focus) <10 sec (Auto focus)
Cell measurement range( cells/mL)	1 x10 <sup>4</sup> - 2x10 <sup>7</sup>
Cell size range	5 - 60 μm
Sample volume	10μL
Staining Method	Trypan Blue stain 0.4% Erythrosin B stain 0.05%
Display	Tablet PC
Exporter formats	JPEG(image), CSV(raw data), PDF
Data export	USB drive, Wifi
Dimensions	27.4(w) x 23.3(d) x 27.4(h) cm
Weight	4 kg
Technical support	Remote assistant provided

## Ordering information

Cat. No.	Description	Contents
EVE-MC2	EVE™ PLUS, Automated cell counter	Main device, Power supply, USB Wifi dongle, EVE™ Cell counting slide (50 slides)
EVS-050	EVE™ Cell counting slide	50 slides (100 counts)
EVS-1000	EVE™ Cell counting slide	1,000 slides (2,000 counts)
EBB-001	Test beads Concentration (avg.) 1.0 x 10 <sup>6</sup>	1mL



website | [www.nanoentek.com](http://www.nanoentek.com)  
e-mail | [sales@nanoentek.com](mailto:sales@nanoentek.com)

FOR RESEARCH USE ONLY.  
Not for use in diagnostic procedures.

### NanoEntek, Inc.

#### Head Office

12F, 5, Digital-ro 26-gil, Guro-gu, Seoul, 08389, Korea  
Tel +82-2-6220-7940 / Fax +82-2-6220-7999

### NanoEntek America, Inc.

220 Bear Hill Road, Suite 102, Waltham, MA 02451, USA  
Tel +1-781-472-2558 / Fax + 1-781-790-5649

### NanoEntek Europe | mts med-tech supplies GmbH

Lochhamerstr. 4a, 82152 Martinsried, Germany  
Tel +49-89-21-55-38-43 / Fax +49-89-99-95-46-60