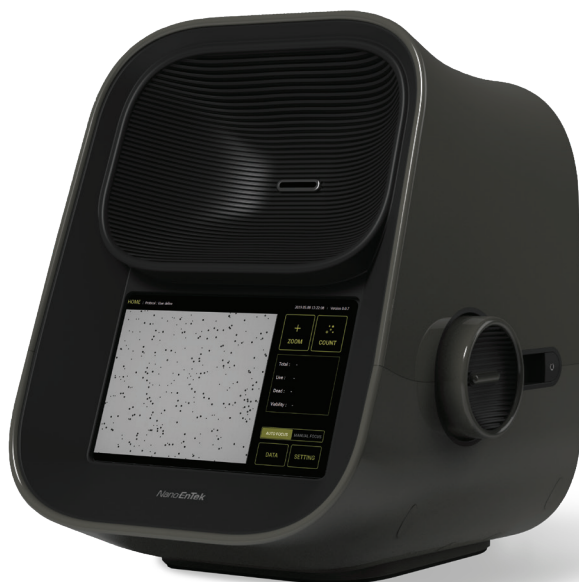


EVE™ PLUS

Automated cell counter

Quick Manual



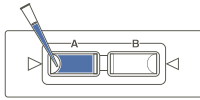
EVE™ PLUS, Automated cell counter

Instructions for using EVE™ PLUS, automated cell counter described in below.

For detailed instructions, refer to the manual supplied with EVE™ PLUS or download the manual from www.nanoentek.com.

01 Load sample & insert slide

- Mix well the 10 μ L of sample with the 10 μ L of 0.4% trypan blue or 0.05% erythrosin B stain.(in a 1:1 ratio)
- Load 10 μ L of the sample mixture on EVE™ Cell counting slide (side A).
- Insert the slide, sample side (side A) first into the slide slot.



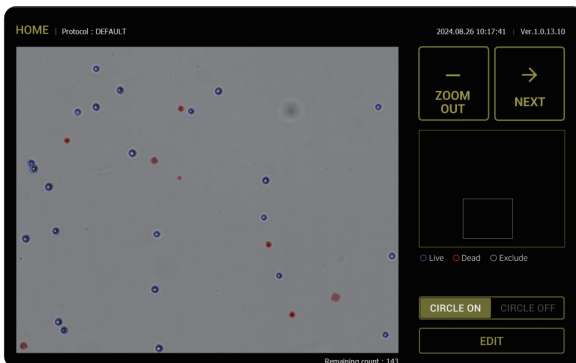
02-1 Auto focusing (AF on)

- Press the COUNT button to obtain results.
» Auto focusing (AF on) mode is set as a default.



02-2 Manual focusing (AF off)

- Press the MANUAL FOCUS button to turn on the manual focusing.
- Press the ZOOM button and adjust the image using the Focus knob.
» Check the reference image for correct analysis (next page).
- Use the navigate the slide and check the image in several positions.
- Press the COUNT button to obtain the result.



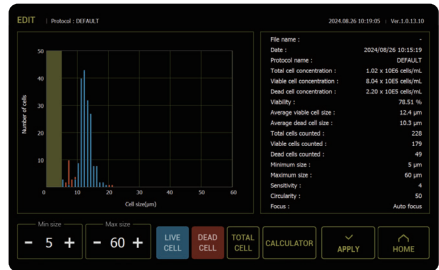
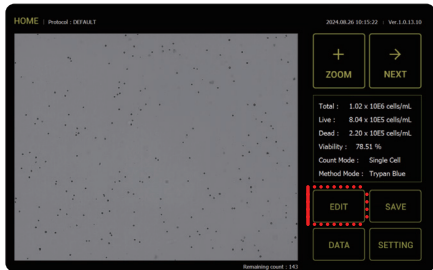
03 Get counting result

- Press EDIT button to see data details as well as graphical representation of data.
- To read the second side of slide (side B), remove and turn around the slide, and repeat the 01~02-2 procedures with the side B.

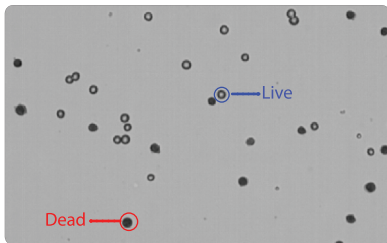
Total :	1.02 x 10E6 cells/mL
Live :	8.04 x 10E5 cells/mL
Dead :	2.20 x 10E5 cells/mL
Viability :	78.51 %
Count Mode :	Single Cell
Method Mode :	Trypan Blue

04 DATA editing

- Press EDIT button to see more details as well as graphical representation of the data.



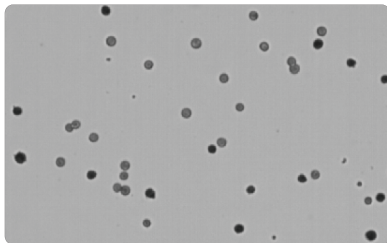
Manual focus guide for correct analysis



<Correct Image>

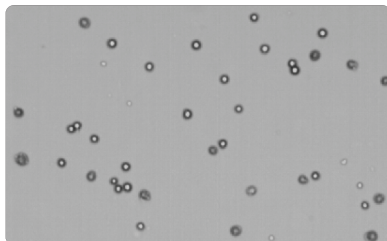
Live cells have bright centers and dark edges.

Dead cells have a uniform dark color throughout the cell with no bright centers.



<Incorrect Image 1>

Live cells have dark centers and are counted as the dead cells.



<Incorrect Image 2>

Dead cells have bright centers and are counted as the live cells.

EVE™ PLUS

Automated cell counter



NanoEntek, Inc.

851-14, Seohae-ro, Paltan-myeon, Hwaseong-si, Gyeonggi-do, 18531, Korea | Tel :+82-2-6220-7940 / Fax:+82-2-6220-7999

NanoEntek America, Inc.

220 Bear Hill Road, Suite 102, Waltham, MA 02451, USA | Tel: +1-781-472-2558 / Fax: + 1-781-790-5649

Email sales@nanoentek.com **Website** www.nanoentek.com